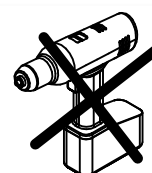
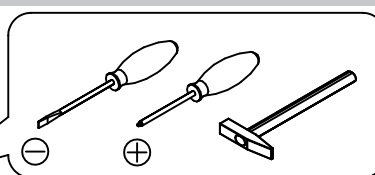
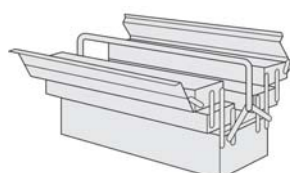
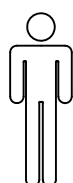


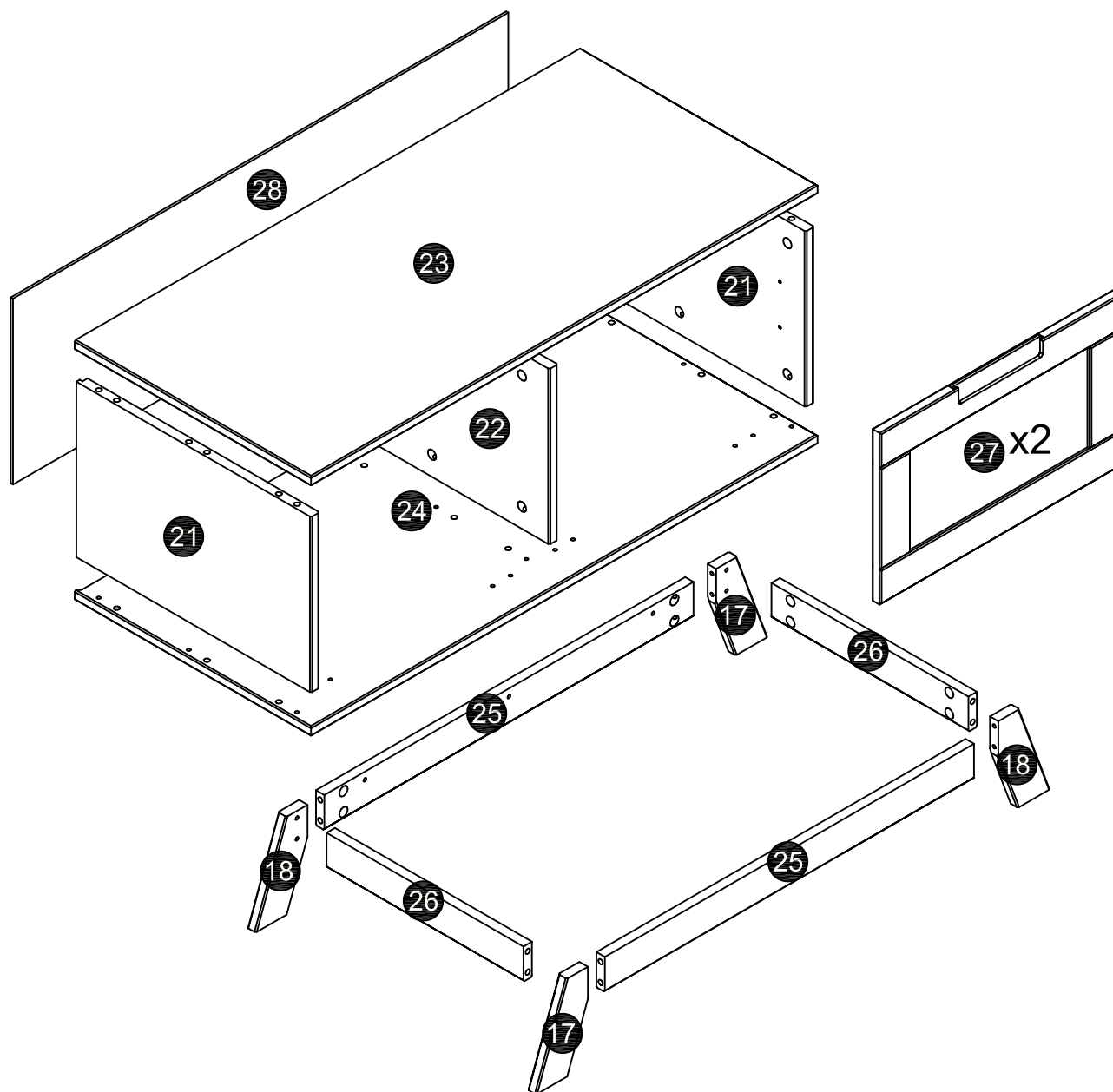
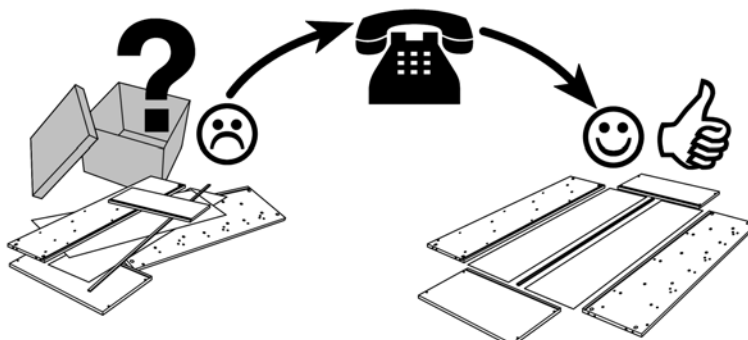
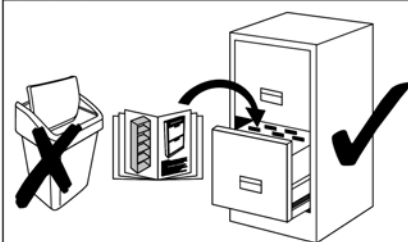
<b>(D)</b>	<b>Montageanleitung</b> 26301	<b>(GB)</b>	<b>Assembly instructions</b> 26301
<b>(FR)</b>	<b>Notice de montage</b> 26301	<b>(IT)</b>	<b>Istruzioni di montaggio</b> 26301
<b>(NL)</b>	<b>Handleiding voor de montage</b> 26301	<b>(PL)</b>	<b>Instrukcja montażu</b> 26301
<b>(CZ)</b>	<b>Montážní návod</b> 26301	<b>(SK)</b>	<b>Návod na montáž</b> 2719
<b>(HU)</b>	<b>Szerelési útmutató</b> 26301	<b>(RO)</b>	<b>Instrucțiuni de montaj</b> 26301
<b>(TR)</b>	<b>Montaj talimatı</b> 26301	<b>(RU)</b>	<b>Инструкция по монтажу</b> 26301



Name • Nom • Nome • Naam • Nazwa • Jméno •  
Názov • Név • Denumire • İsim • Название

Nr. • No. • N° • Номер • Č • Sz

Typ • Type • Tip • Tipus • Tipo • Típus



<b>A</b> Ø8x30mm 18x	<b>B</b> Ø6.5x34mm 34x	<b>C</b> Ø15x11mm 34x	<b>G</b> 20x20mm Ø6.5mm 6x	<b>H</b> Ø6.3x11mm 12x	<b>I</b> Ø15x3mm 4x	<b>J</b> Ø1.2x20mm 25x	<b>K</b> 1x
<b>L</b> 20x20mm Ø4.5mm 1x	<b>M</b> Ø4x60mm 1x	<b>N</b> Ø3.5x15mm 9x	<b>R</b> 200mm 2x	<b>S</b> Ø2.5x13mm 12x	<b>T</b> 4x	<b>U</b> Ø26mm 4x	<b>V</b> 40x17x20mm 2x



40x17x20mm  
2x

21x2

22

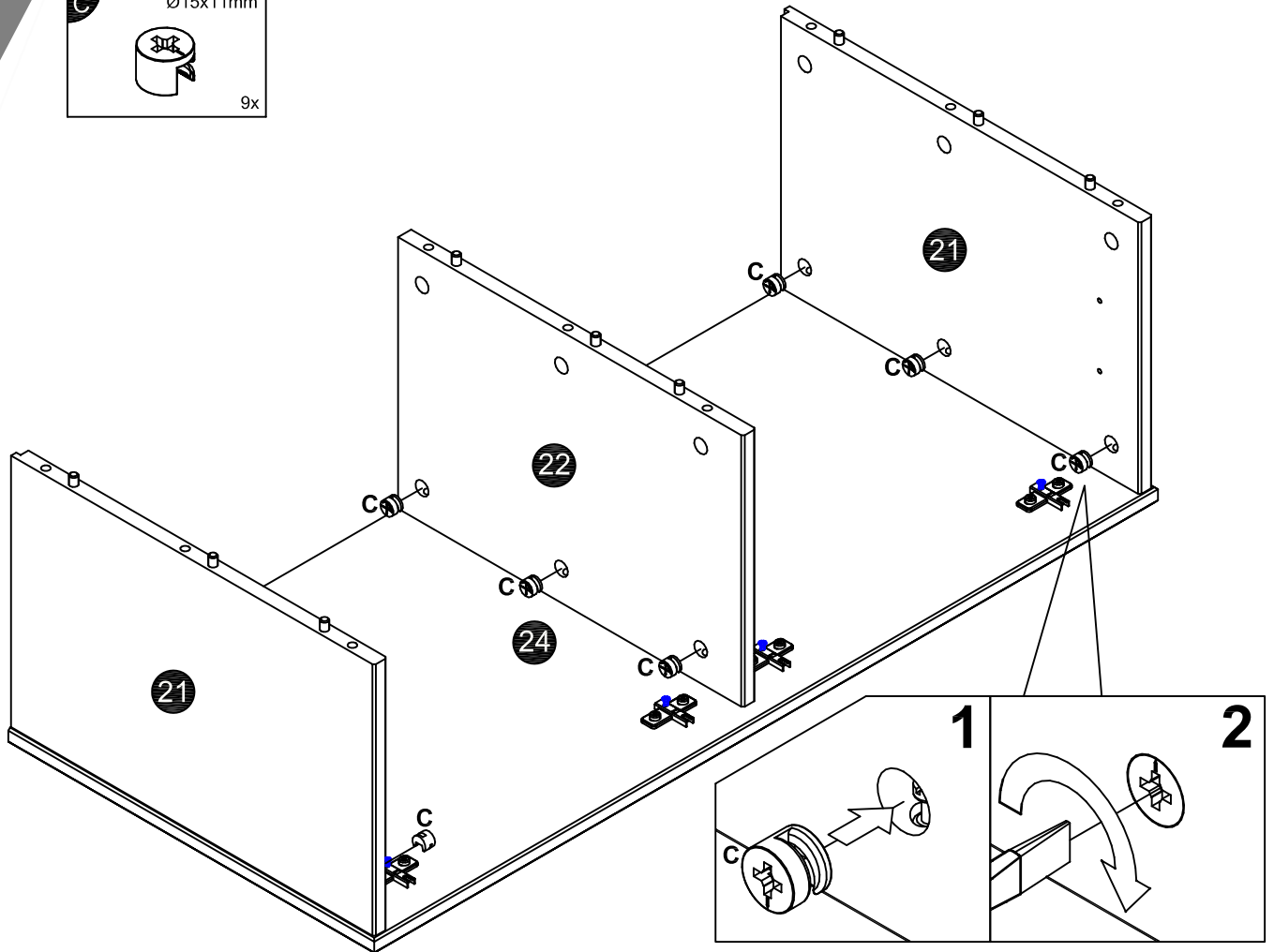
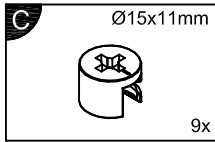
23

24

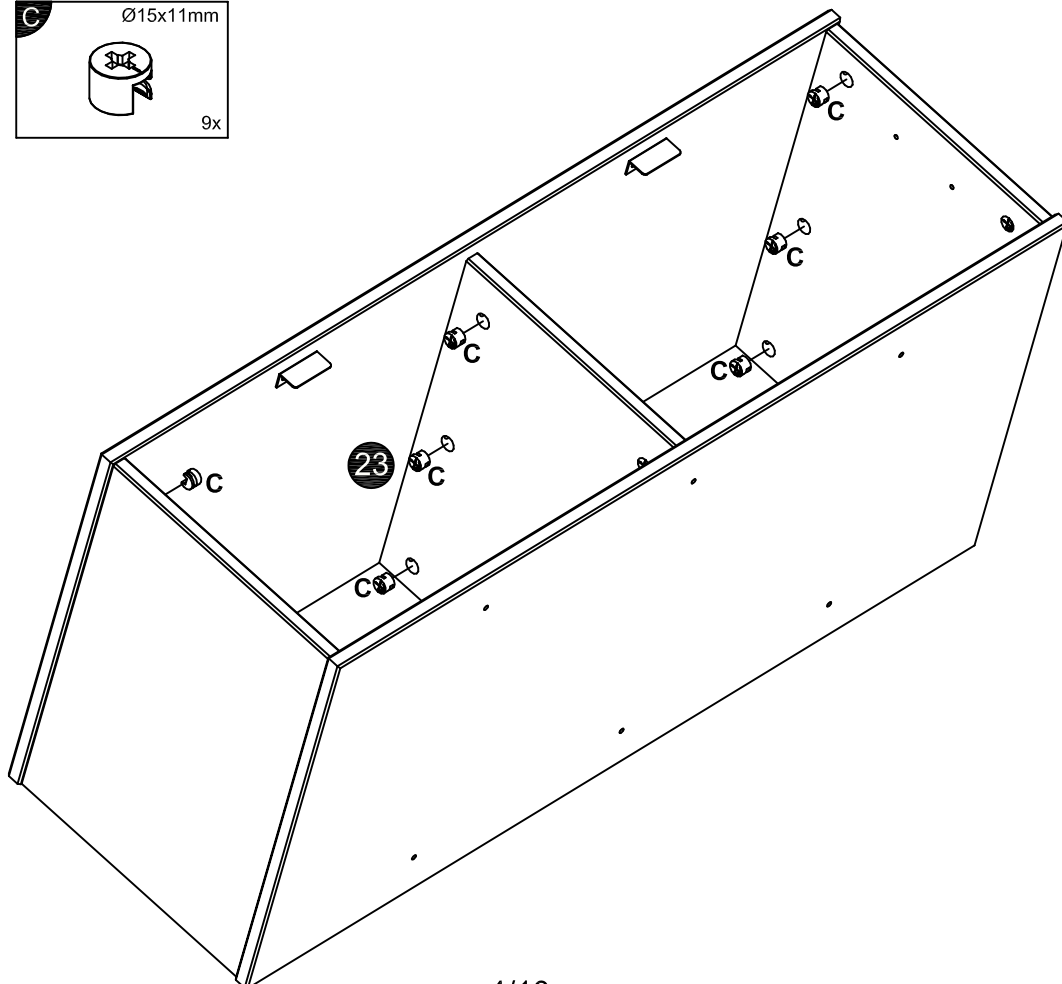
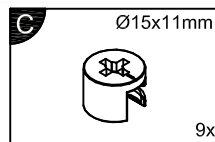
3/10

26301

2

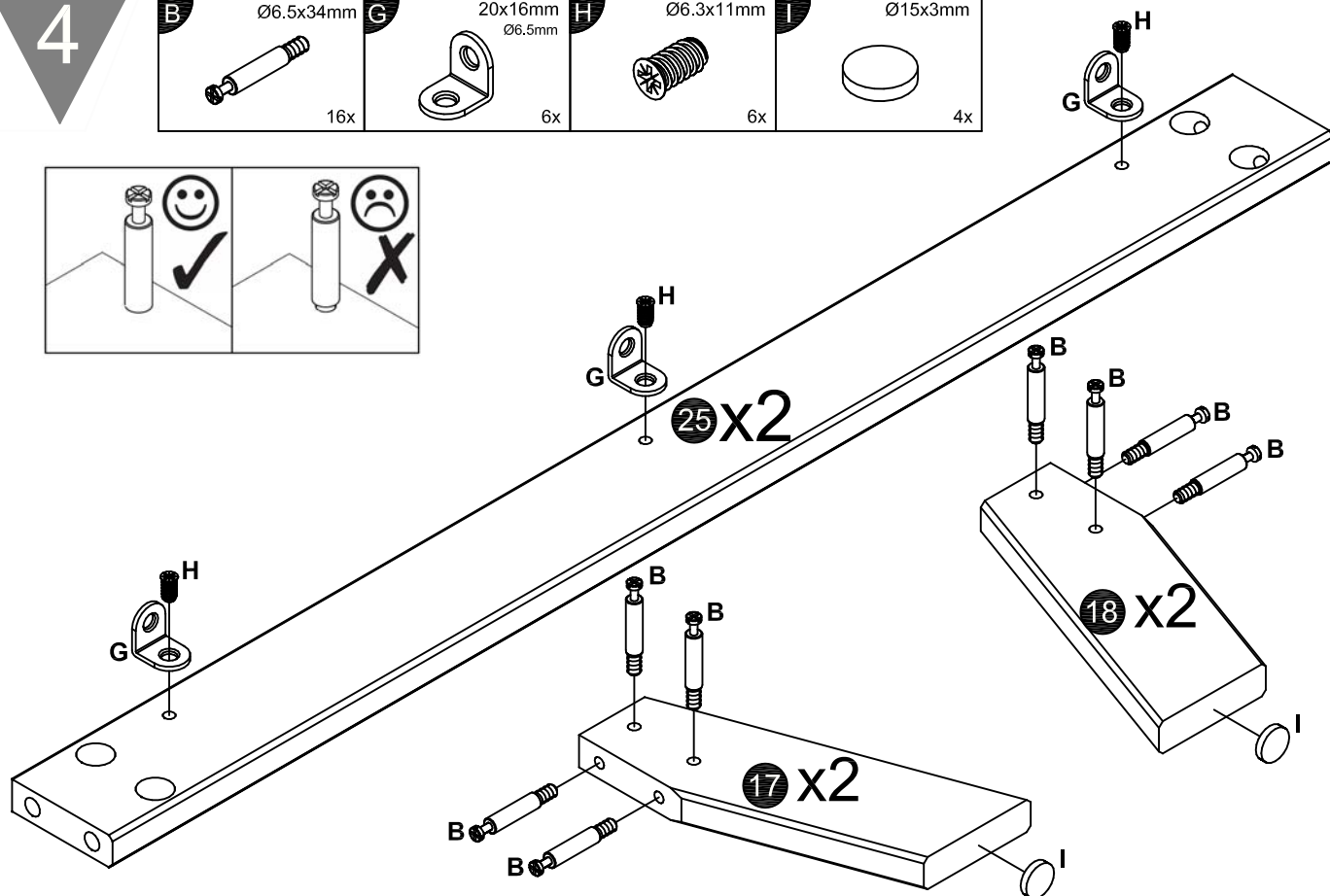
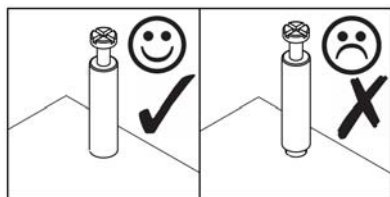


3



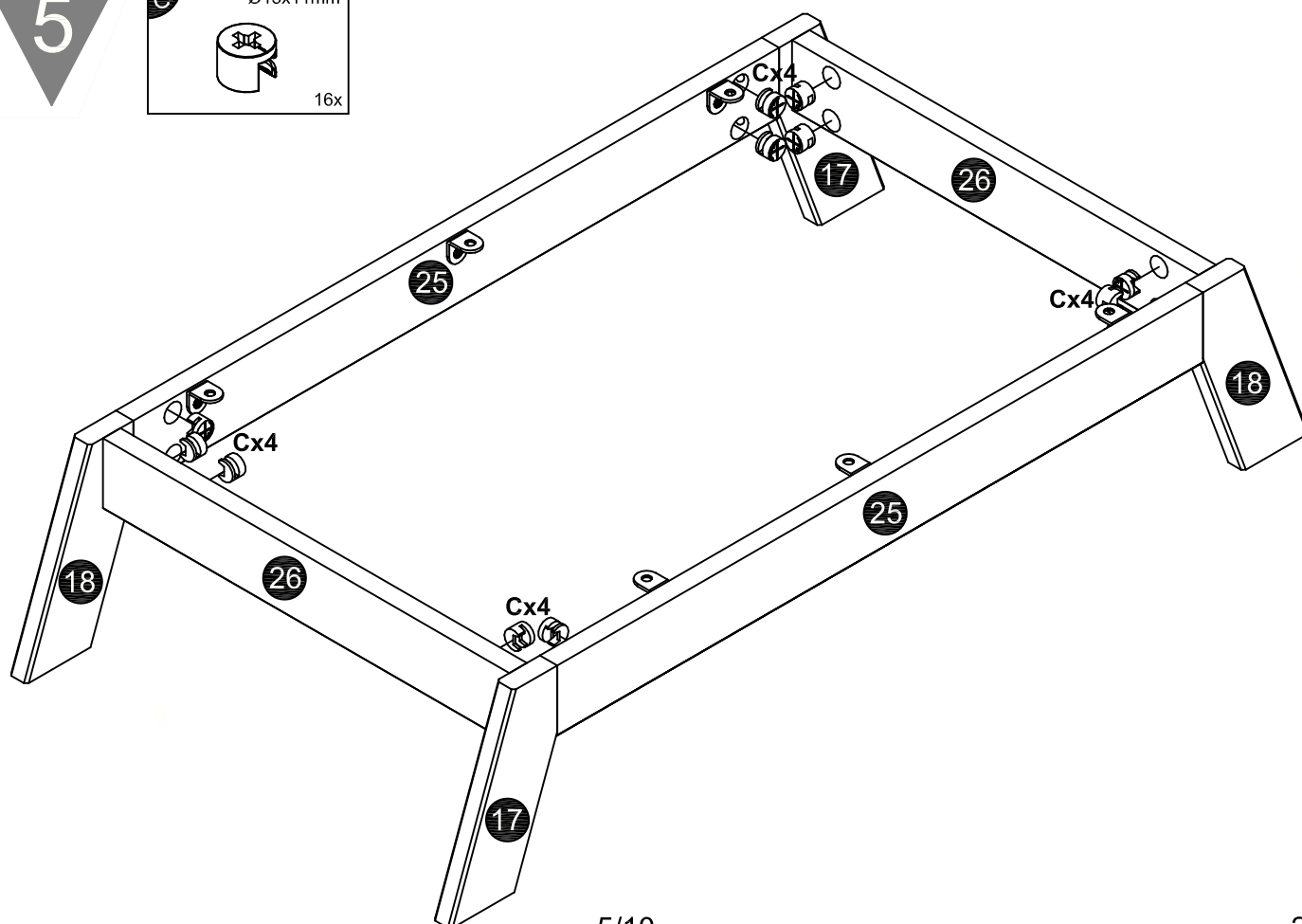
4

<b>B</b>	Ø6.5x34mm	<b>G</b>	20x16mm Ø6.5mm	<b>H</b>	Ø6.3x11mm	<b>I</b>	Ø15x3mm
	16x		6x		6x		4x

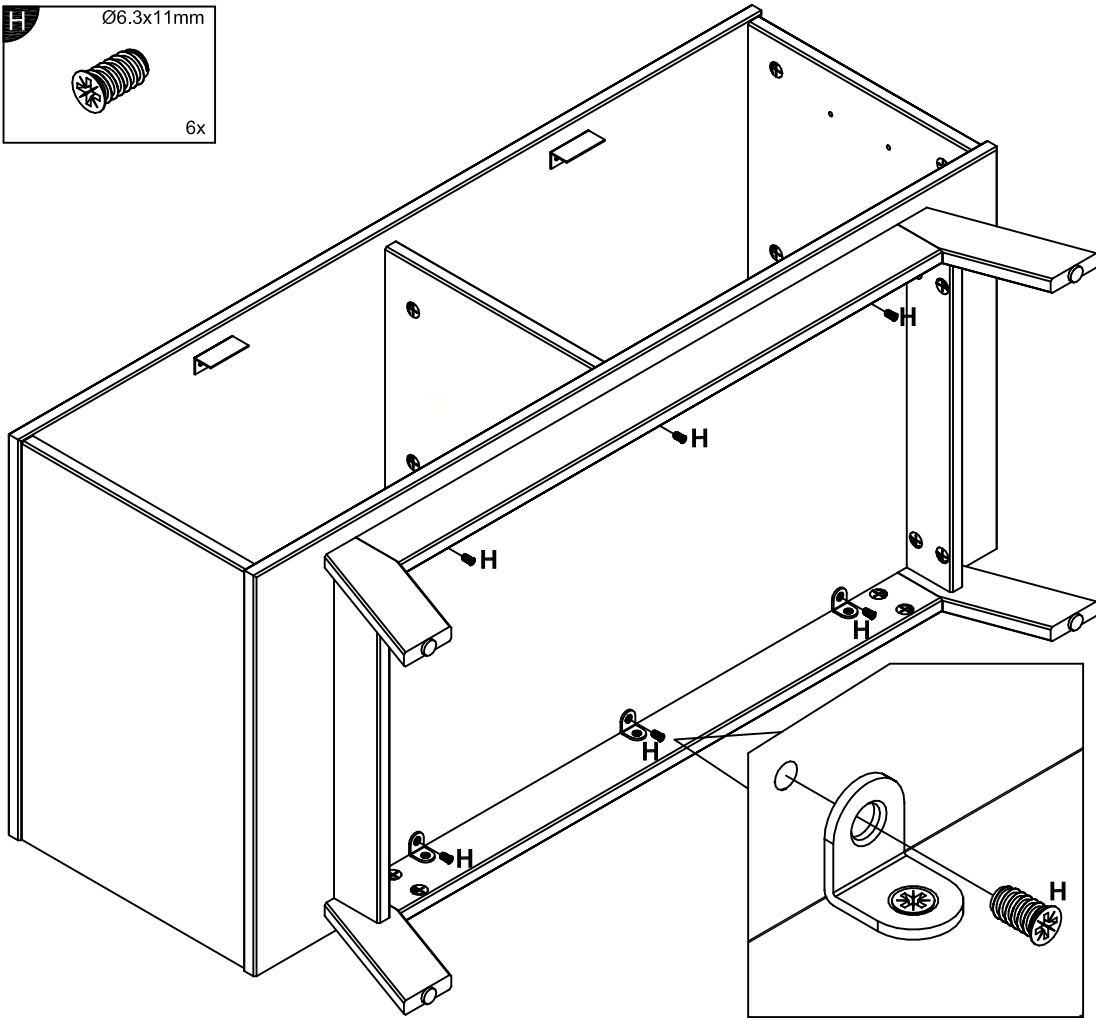
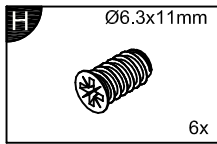


5

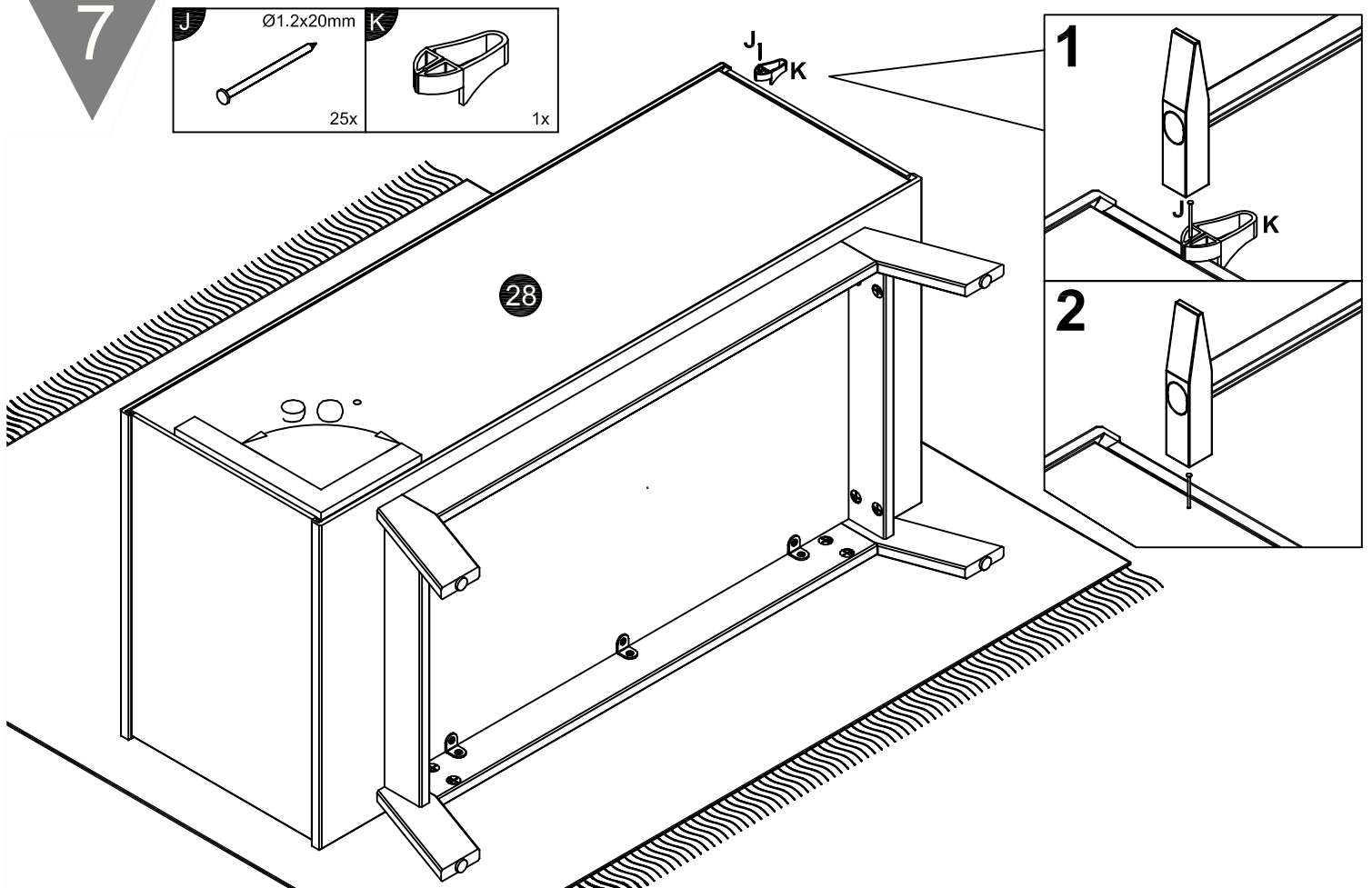
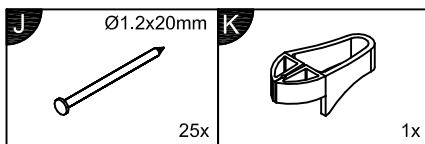
<b>C</b>	Ø15x11mm
	16x

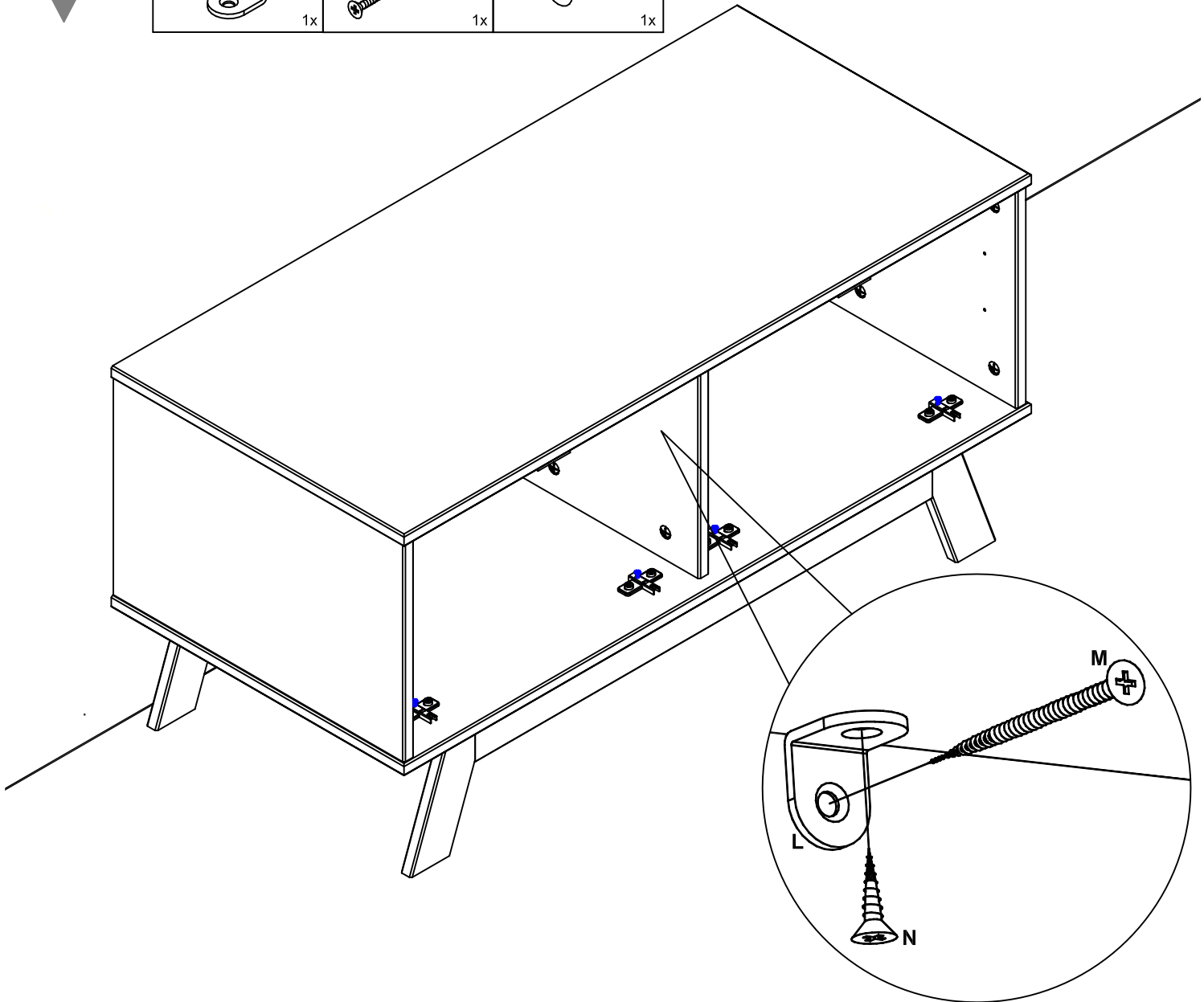
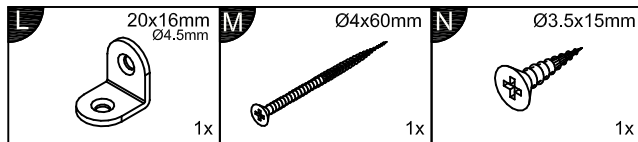


6



7

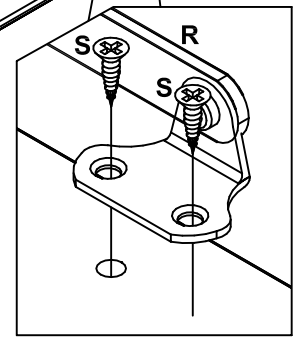
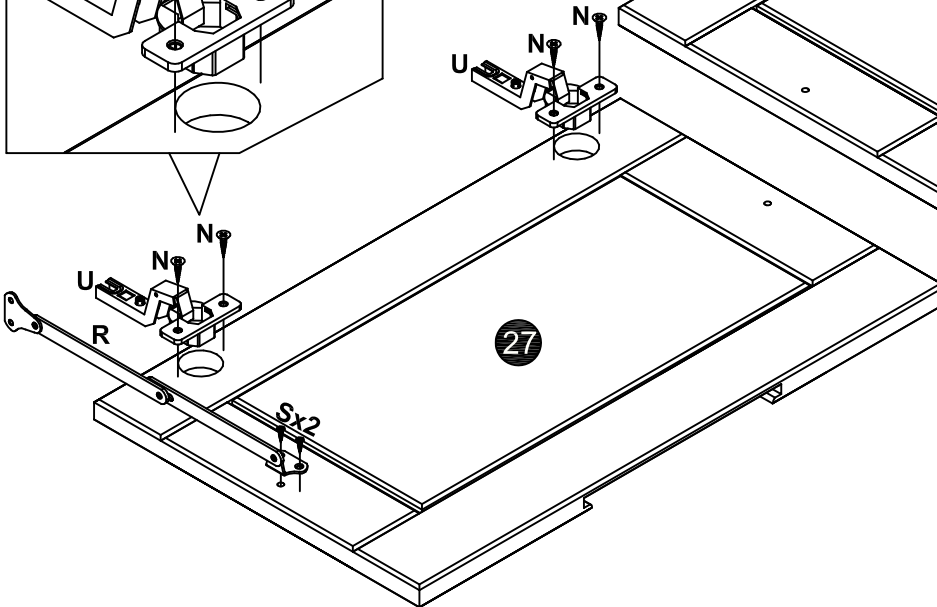
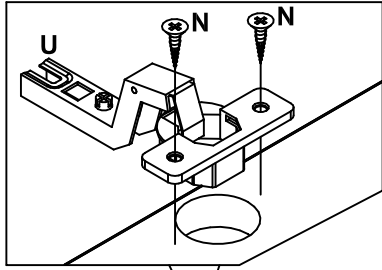
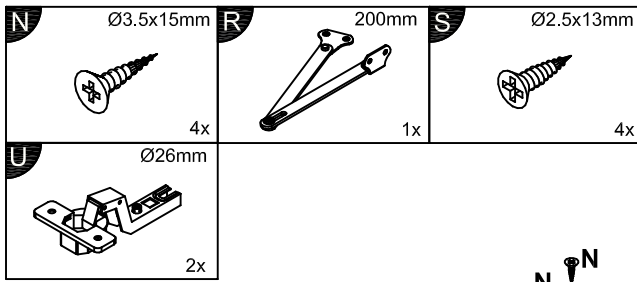




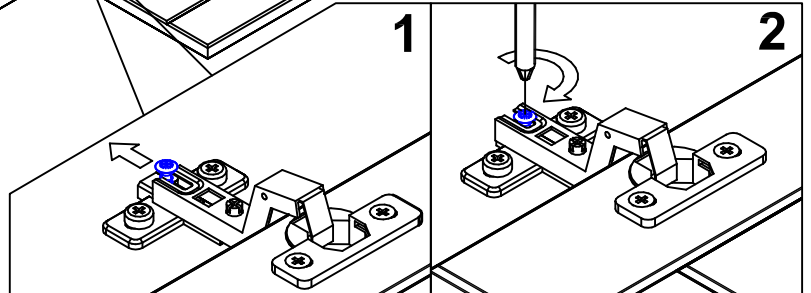
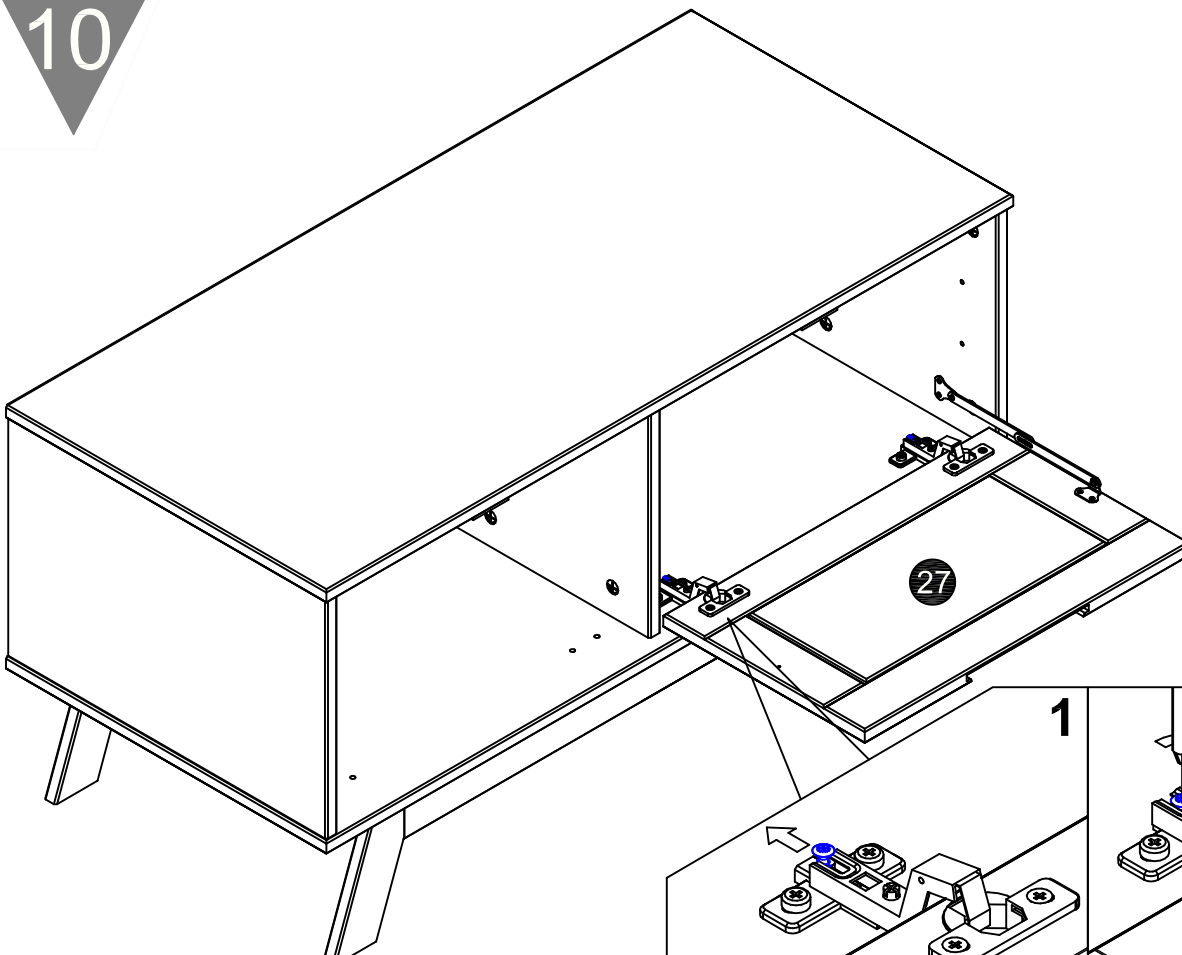
!	Achtung • Attention • Attenzione • Opgelet • Uwaga • Pozor • Figyelem • Aten ție • Dikkat • Вниманіе	!
(D)	Wandbefestigung dient als Kippschutz - unbedingt anbringen! Bei einigen Wandtypen kann ein Spezialdübel erforderlich sein!	
(GB)	The wall fastening serves to prevent tipping - be absolutely sure to mount it! For certain wall types, a special dowel may be necessary!	
(NL)	Bevestiging aan de muur dient als kantelbescherming - zeker en vast bevestigen! Bij enkele muurtypes is een speciale plug misschien vereist!	
(PL)	Mocowanie do ściany jest jednocześnie zabezpieczeniem przed przewróceniem - koniecznie zamontować! Do niektórych rodzajów ścian konieczne mogą być specjalne wkręty!	
(TR)	Duvardaki sabitleme, devrilmeye kar ışı bir emniyet tedbiridir ve mutlaka monte edilmelidir! Baz ı duvar tiplerindebunun ı țin özel bir dübel gerekli olabilir!	
(RU)	Обязательно установите крепление на стене во избежание опрокидывания! Для некоторых типов стен может потребоваться специальный дюбель!	
(FR)	La fixation murale sert de protection contre le basculement — à installer impérativement ! Pour certains types de murs il faut des chevilles spéciales!	
(IT)	Il fissaggio alla parete serve da protezione anti-ribaltamento - attaccarla assolutamente! Per alcune strutture di parete pu ò essere necessario un tassello speciale!	
(CZ)	Montáž na stěnu slouží jako ochrana proti převrnutí - bezpodmínečně umístěte! U některých typů stěn může být zapotřebí speciální hmoždinka!	
(SK)	Upevnenie na stenu slúži ako ochrana proti prevráteniu - bezpodmienečne použite! Pre niektoré druhy stien m ôže byť potrebná špeciálna hmoždinka!	
(HU)	A termék a falhoz kel rögz íteni, különben az felborulhat! Egyes falt ípusoknál speciális tiplit kell használni!	
(RO)	Sistemul de fixare la perete serveşte ca protecţie la răsturnarede montat obligatoriu! Pentru unele tipuri de pere ți este posibil să fie necesar un diblu special!	



9

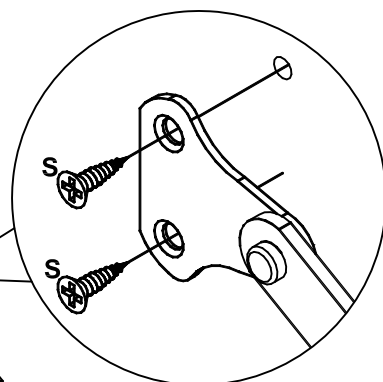
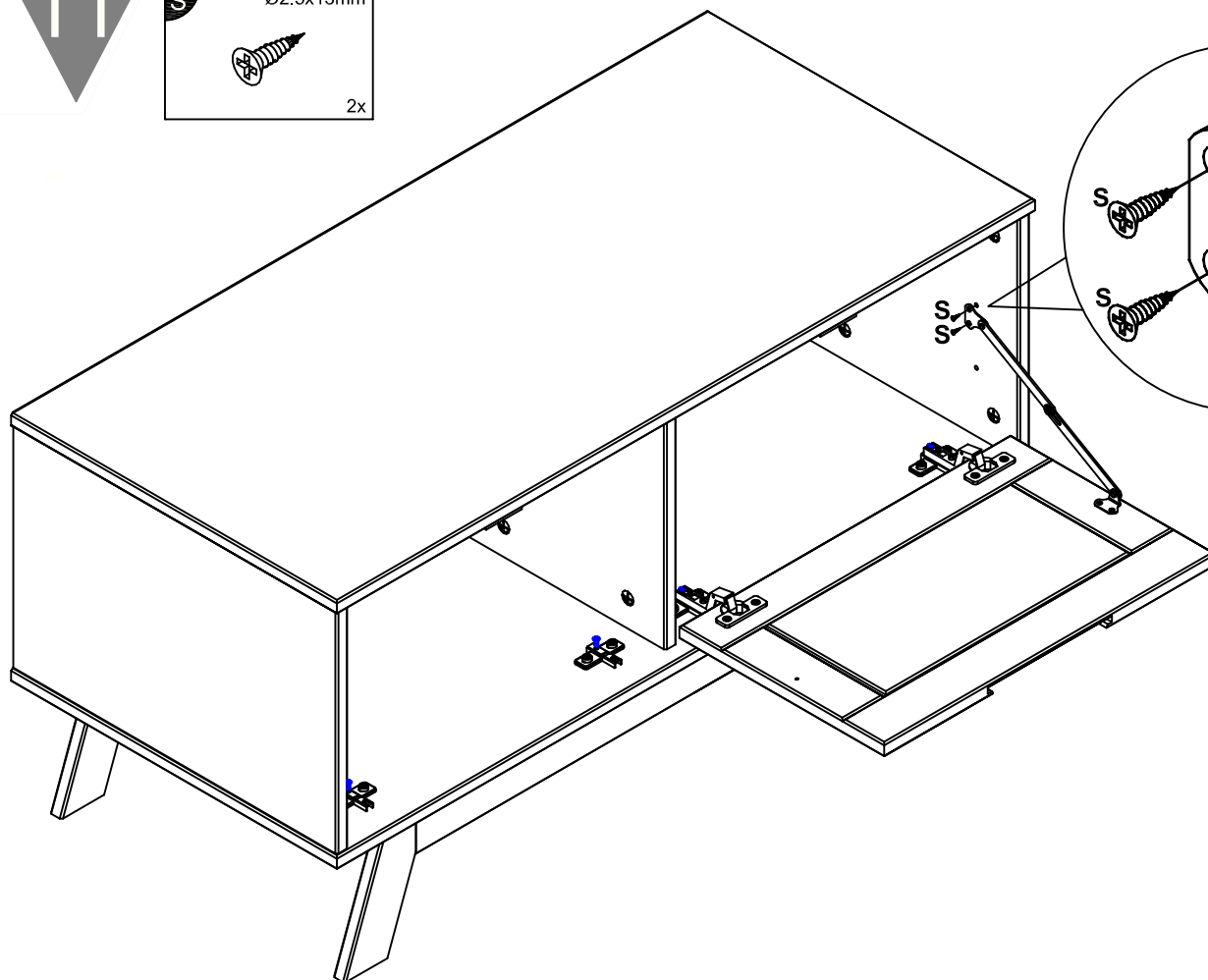
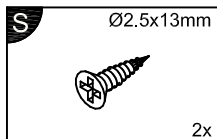


10

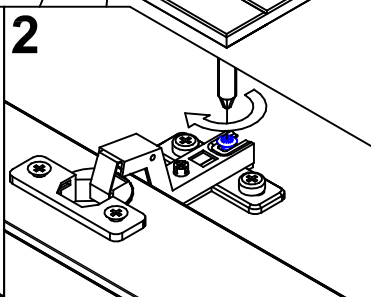
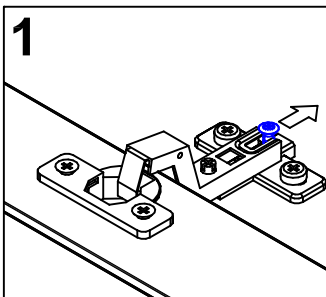
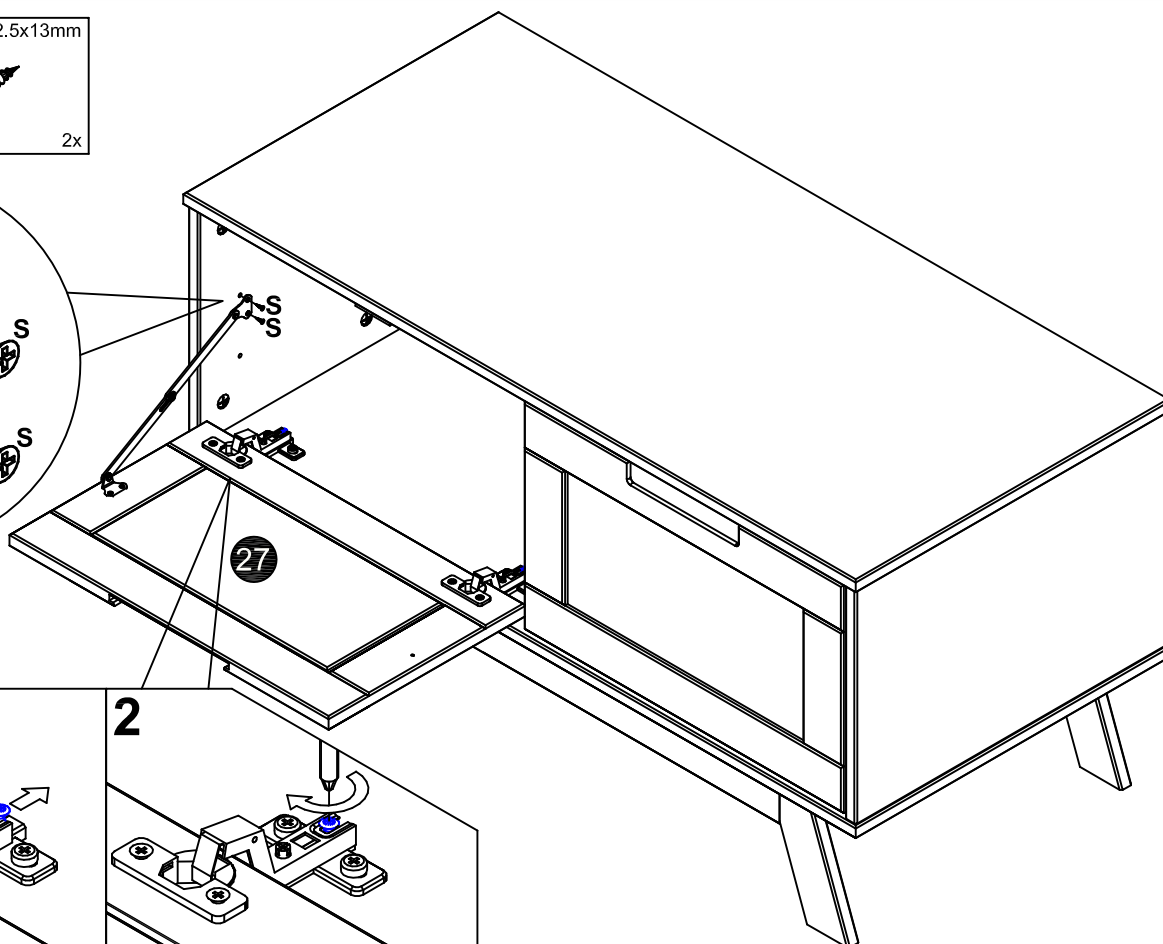
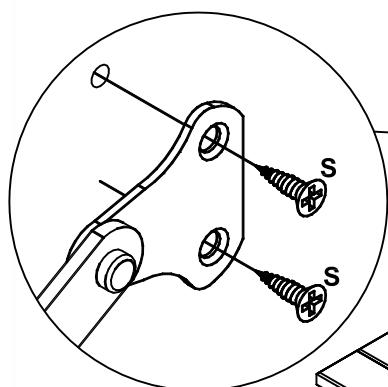
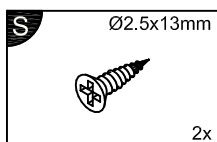




11

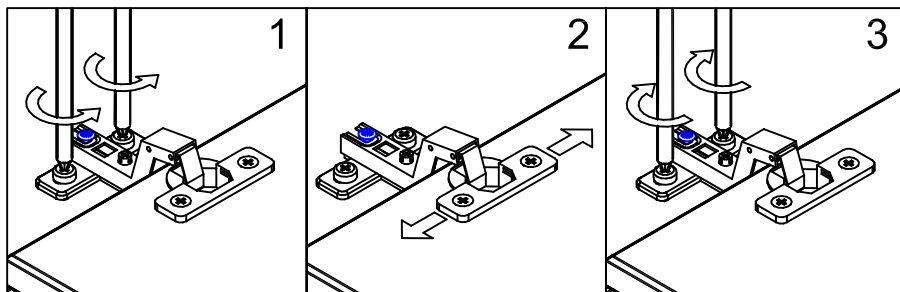
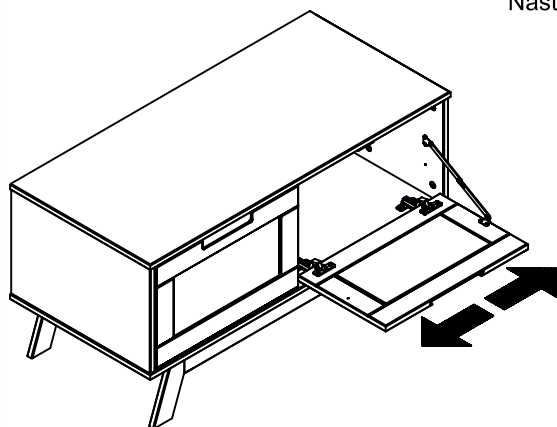


12

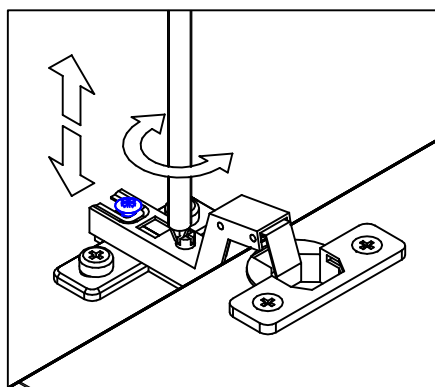
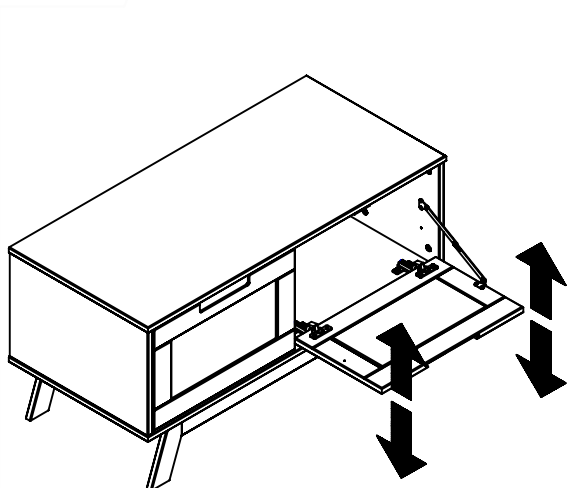


# 13

Türen einstellen (Scharniere justieren) Vyrovnajte dvířka (seříd'te závěsy)  
 Adjusting the doors (adjusting the hinges) Nastavenie dverí (nastavenie závesov)  
 Régler les portes (ajuster les charnières) Állítsa be az ajtókat (állítsa be a zsanérokát)  
 Sistemare le porte (regolare le cerniere) Reglare uși (ajustare balamale)  
 Deuren instellen (scharnieren afstellen) Kapıların ayarlanması (menteşelerin seviye ayarı)  
 Nastawić drzwi (wyregulować zawiasy) Регулировка дверей (регулировка шарнира)



# 14



# 15

