

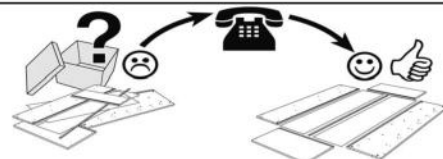
Bardi (RC/STV-2EL/2xSTV-SE-1OT/STV) (1OT/STV-SE-2EL/2xSTV-RC/STV)



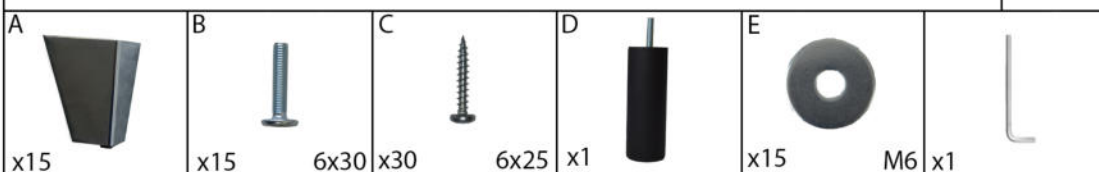
- | | |
|----------------------------------|--------------------------------|
| (DE) Montageanleitung | (IT) Istruzioni di montaggio |
| (PL) Instrukcja montażu | (FR) Notice de montage |
| (NL) Handleiding voor de montage | (RO) Instrucțiuni de asamblare |
| (GB) Assembly instructions | (SK) Montážny návod |
| (TR) Montaj talimatı | (CZ) Montážní návod |
| (RU) Инструкция по монтажу | (HU) Szerelési útmutató |

Service - Servis - Dienstverlening - Servis - Serwis - Сервисная служба - Servizio - Service
Serviciu - Služby - Szolgáltatás

Name - Nazwa - Naam - Name - Isim - название
Nome - Nom - Numele - Meno - Jméno - Neve



Bardi (RC/STV-2EL/2xSTV-SE-1OT/STV)(1OT/STV-SE-2EL/2xSTV-RC/STV)



(RC/STV-2EL/2xSTV-SE-1OT/STV)

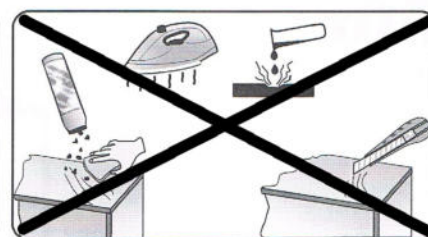
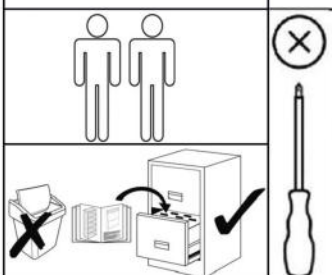








(1OT/STV-SE-2EL/2xSTV-RC/STV)

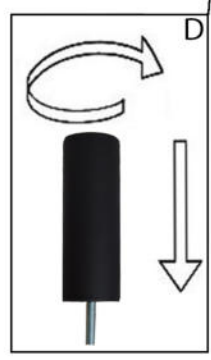
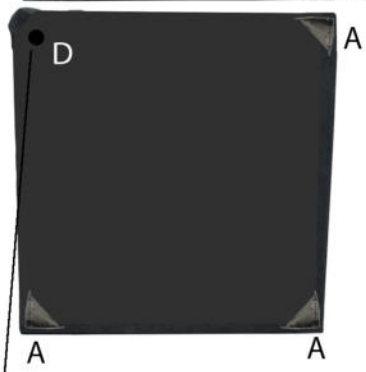
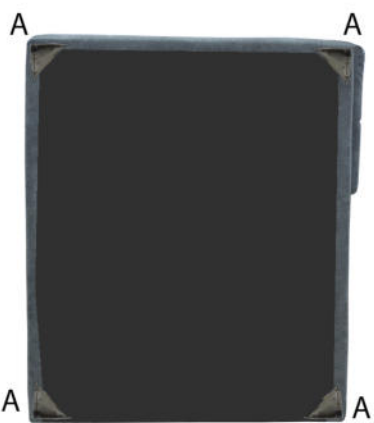
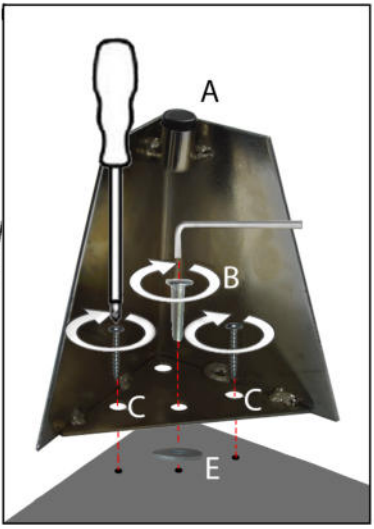


MAX 35KG

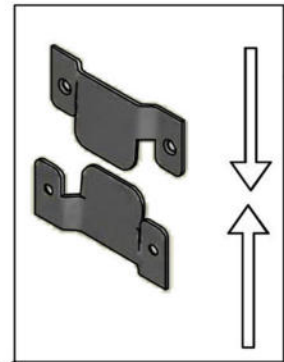
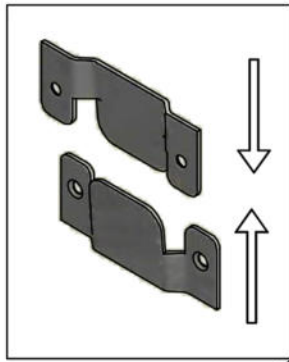
17-02-2021



- A  x15
- B  6x30 x15
- C  6x25 x30
- D  x1
- E  x15 M6
-  x1



17-02-2021



17-02-2021

